

OWNER INFORMATION:
 McGRATH REAL ESTATE PARTNERS
 BARRETT KIRK
 950 CORBINDALE RD., SUITE 300
 HOUSTON, TEXAS 77024
 713-268-5150

LANDSCAPE ARCHITECT
 MEEKS DESIGN GROUP, INC.
 BRANDON BOOHER
 1755 N. COLLINS BLVD. #300
 RICHARDSON, TX 75080
 972-690-7474

NOTE
 100% COVERAGE OF GROUNDCOVER, DECORATIVE PAVING, DECORATIVE ROCK, OR A PERENNIAL GRASS IS REQUIRED IN PARKING LOT ISLANDS, SWALES AND DRAINAGE AREAS, THE PARKING LOT SETBACK, RIGHTS OF WAY, AND ADJACENT PROPERTY DISTURBED DURING CONSTRUCTION. REFERENCE CIVIL ENGINEER FOR COMPLETE GRADING.

SITE IRRIGATION
 IRRIGATION SYSTEM WILL BE DESIGNED AND INSTALLED BY A CERTIFIED INSTALLER PRIOR TO OCCUPANCY.

LANDSCAPE REQUIREMENTS
LANDSCAPE COVERAGE
 TOTAL SITE AREA: 421,472 S.F. (9.73 ACRES)
 REQUIRED: 30 LANDSCAPE POINTS FOR EVERY 1,000 S.F. OF SITE AREA (421,472 S.F. / 1,000 S.F. = 421.47 * 30 = 12,644.10 POINTS)
 PROVIDED: 10% OF POINTS CREDIT FOR LICENSED LA: 1,264.41
 WATER CONSERVING IRRIGATION SYSTEM: 2,528.82
 LANDSCAPE MATERIAL
 CANOPY TREE: 20,925
 NON-CANOPY TREE: 520
 SHRUBS (5 GAL.): 1,760
 SHRUBS (1-3 GAL.): 1,462
 TOTAL: 12,645+

REQUIRED: 1 CANOPY TREE FOR EVERY 25 L.F.
 CAMERON LANE: 1,144 L.F. / 25 L.F. = 45.76 TREES
 CWT LANE: 384.93 L.F. / 25 L.F. = 15.396 TREES
 PROVIDED: CAMERON LANE: 46 TREES
 CWT LANE: 6 TREES (WATER CASEMENT - ADDITIONAL REQUIRED TREES HAVE BEEN PROVIDED THROUGHOUT THE PROPERTY)

REQUIRED: PARKING AREAS ADJACENT TO STREET TO BE SCREENED
 PROVIDED: PARKING AREAS SCREENED WHERE REQUIRED

LANDSCAPING POINT CALCULATIONS

SYMBOL	SIZE (CAL. INCHES)	NAME & TYPE	QUANTITY	POINT VALUE	POINT
	3" MIN.	CANOPY TREE	93	225	20,925
	2" MIN.	NON-CANOPY TREE	13	40	520
	5 GAL. MIN.	SHRUB	176	10	1,760
	1 GAL. MIN.	SHRUB	1,462	1	1,462

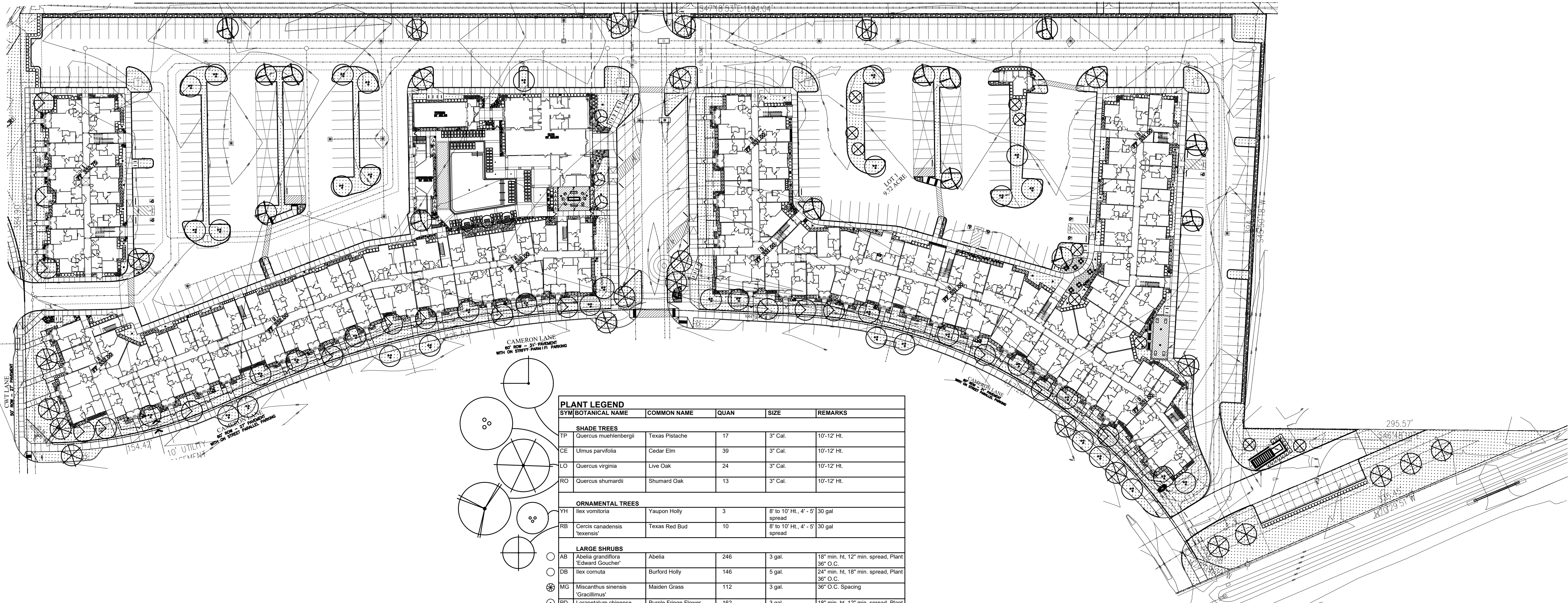
LEGEND

- TEXAS PISTACHE
- SHUMARDS RED OAK
- CEDAR ELM
- LIVE OAK
- CRAPE MYRTLE
- TEXAS REDBUD
- N.R. STEVENS HOLLY 5 GAL. SHRUB
- BURFORD HOLLY 5 GAL. SHRUB

ISSUES:
 (1) 03-28-25 CITY SUBMITTAL

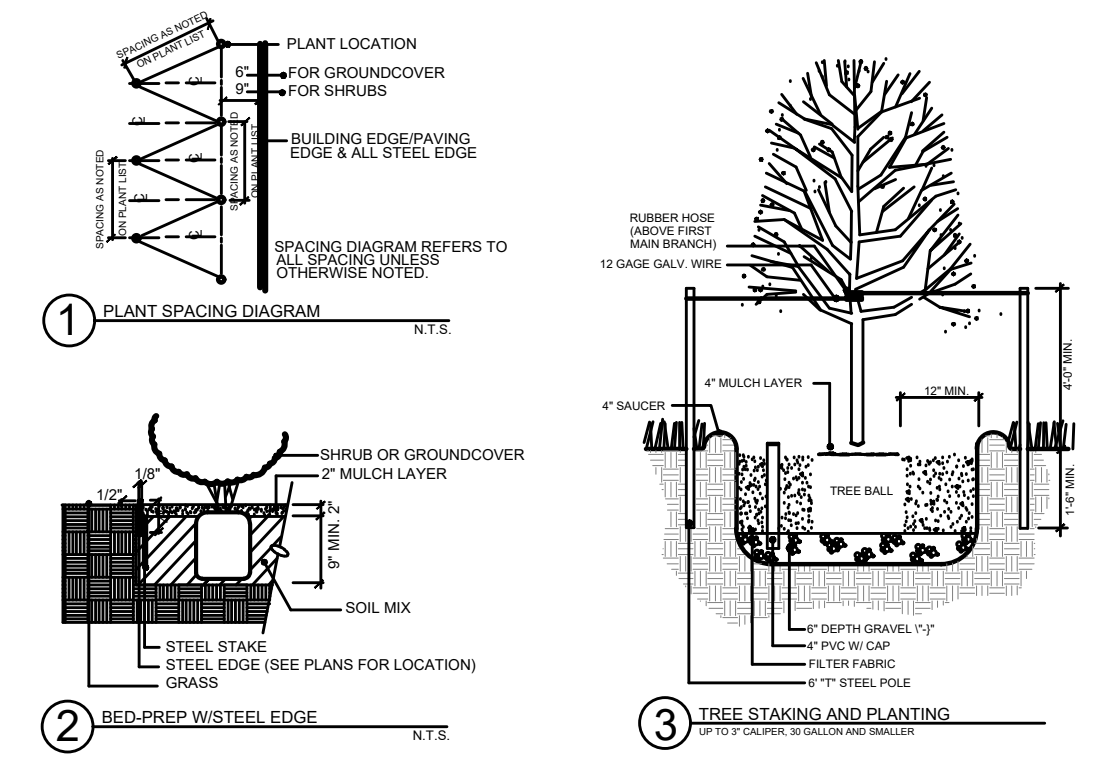
REVISIONS:

CLIENT:
 McGRATH REAL ESTATE PARTNERS
 950 CORBINDALE RD.
 SUITE 300
 HOUSTON, TX 77024

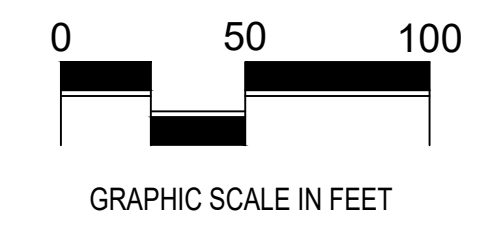


PLANT LEGEND

SYM	BOTANICAL NAME	COMMON NAME	QUAN	SIZE	REMARKS
SHADE TREES					
TP	Quercus muehlenbergii	Texas Pistache	17	3" Cal.	10'-12' Ht.
CE	Ulmus parvifolia	Cedar Elm	39	3" Cal.	10'-12' Ht.
LO	Quercus virginia	Live Oak	24	3" Cal.	10'-12' Ht.
RO	Quercus shumardi	Shumard Oak	13	3" Cal.	10'-12' Ht.
ORNAMENTAL TREES					
YH	Ilex vomitoria	Yaupon Holly	3	8' to 10' Ht., 4' - 5' spread	30 gal
RB	Cercis canadensis 'texensis'	Texas Red Bud	10	8' to 10' Ht., 4' - 5' spread	30 gal
LARGE SHRUBS					
AB	Abelia grandiflora 'Edward Goucher'	Abelia	246	3 gal.	18" min. ht, 12" min. spread, Plant 36" O.C.
DB	Ilex cornuta	Burford Holly	146	5 gal.	24" min. ht, 18" min. spread, Plant 36" O.C.
MG	Miscanthus sinensis 'Gracillimus'	Maiden Grass	112	3 gal.	36" O.C. Spacing
PD	Loropetalum chinense 'Plum Delight'	Purple Fringe Flower	162	3 gal.	18" min. ht, 12" min. spread, Plant 36" O.C.
TS	Leucophyllum Frutescens	Texas Sage	142	3 gal.	18" min. ht, 12" min. spread, Plant 36" O.C.
DWM	Myrica	Dwarf Wax Myrtle	199	3 gal.	18" min. ht, 12" min. spread, Plant 36" O.C.
NR	Ilex x Nellie R. Stevens	Nellie R. Stevens Holly	30	7 gal.	5' Ht. Min, sheared, full to ground, uniform
RY	Herpetaloe parviflora	Red Yucca	20	5 gal.	18" min. ht, Plant 36" O.C.
ORNAMENTAL SHRUBS					
AS	Salvia greggii	Autumn Sage	28	3 gal.	12" O.C. Spacing
DI	Raphiolepis indica 'nana'	Dwarf Indian Hawthorn	65	3 gal.	12" O.C. Spacing
MF	Nassella tenuissima	Mexican Feathergrass	171	1 gal.	12" O.C. Spacing
SL	Ligustrum sinense	Sunshine Ligustrum	102	3 gal.	12" O.C. Spacing
DY	Ilex vomitoria 'nana'	Dwarf Yaupon Holly	109	3 gal.	12" O.C. Spacing
GC	Muhlenbergia capillaris	Gulf Muhly	84	3 gal.	12" O.C. Spacing
RM	Salvia rosmarinus 'Foxtail'	Rosemary Foxtail	22	3 gal.	12" O.C. Spacing
GROUNDCOVERS					
LN	Lantana camara 'American Red'	Lantana	105 s.f.	4" pots	12" O.C. Spacing
SC	Seasonal Color	Seasonal Color	80 s.f.	4" pots	12" O.C. Spacing
BS	Cynodon spp.	Common Bermuda	79,120+ s.f.		Solid sod
DG	Earth tone color	Decomposed Granite	540+ S.F.		Install over filter fabric. Min. 4" Depth.
RR	Tan color	'Colorado' River Rock	6,320+ S.F.		Install over filter fabric. Min. 4" Depth.



1 CITY REQ'S - LANDSCAPE PLAN
 SCALE: 1"=50'-0"



TRADITIONS
 COLLEGE STATION, TEXAS

mgb
 landscape architects
 MEEKS DESIGN GROUP, INC.
 1755 N. COLLINS BLVD., SUITE 300
 RICHARDSON, TX 75080
 PH (972) 690-7474
 F (972) 690-7878

CITY SUBMITTAL
 TRADITIONS
 COLLEGE STATION, TEXAS
 JOB NUMBER: MCG-2401
 CITY REQ'S - LANDSCAPE PLAN
 LP0.01